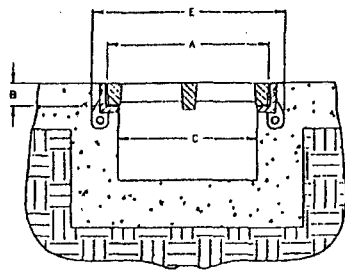
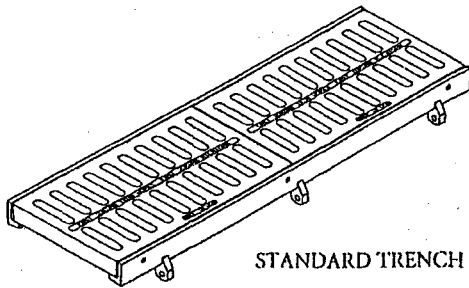


**TRENCH GRATING**



SECTION

TYPICAL TRENCH INSTALLATION



STANDARD TRENCH GRATES

**OTHER STYLES AVAILABLE**

Trench grate installations provide a means of draining large surface areas effectively. These trench grates are designed for heavy duty service and AASHTO H20 loading conditions.

Trench grates and frames are gray cast iron per ASTM A48 Class 35B. For larger trench widths, please contact our Product Engineering Department.

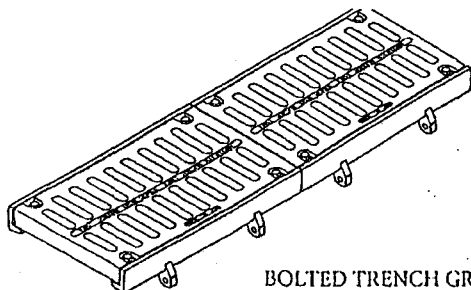
Standard trench grates are furnished in 23 7/8" lengths. Frames are furnished in 24", 36", and 48" lengths. It is important that frames be accurately set when forming the trench to provide an even seating surface for the grates.

Bolted trench grate assemblies are furnished in standard 24" sections. Bolts are 1/2" hex head stainless steel with flat washers.

Solid trench covers are available.

**6900 Series**

Cat. No.	A		B		C		E		OPEN AREA		GRATE WT.		UNIT WT.	
	GRATE WIDTH	SEAT DEPTH	TRENCH WIDTH	FRAME WIDTH	SQ. IN./FT	SQ CM/M	LB/FT.	KG/M	LB/FT	KG/M				
	IN.	MM	IN.	MM	IN.	MM	IN.	MM						
6901	8	203	2	51	6	152	11	279	29	614	25	36	38	57
6902	10	254	2	51	8	203	13	330	33	699	39	58	52	77
6903	12	305	2	51	10	254	15	381	40	846	43	64	56	83
6904	14	356	2	51	12	305	17	432	49	1037	50	75	63	94
6905	17	432	2	51	15	381	20	508	66	1397	62	92	75	112
6906	20	508	2	51	18	457	23	584	90	1905	65	97	78	116
6907	23	584	2	51	21	533	26	660	91	1926	85	126	98	146
6908	26	660	2	51	24	610	29	737	130	2752	85	126	98	146



BOLTED TRENCH GRATES

**CAUTION:**  
DO NOT DISASSEMBLE BOLTED GRATES BEFORE SETTING SECTIONS IN CONCRETE.

EAST JORDAN IRON WORKS, INC