

**STANDARD FEATURES**

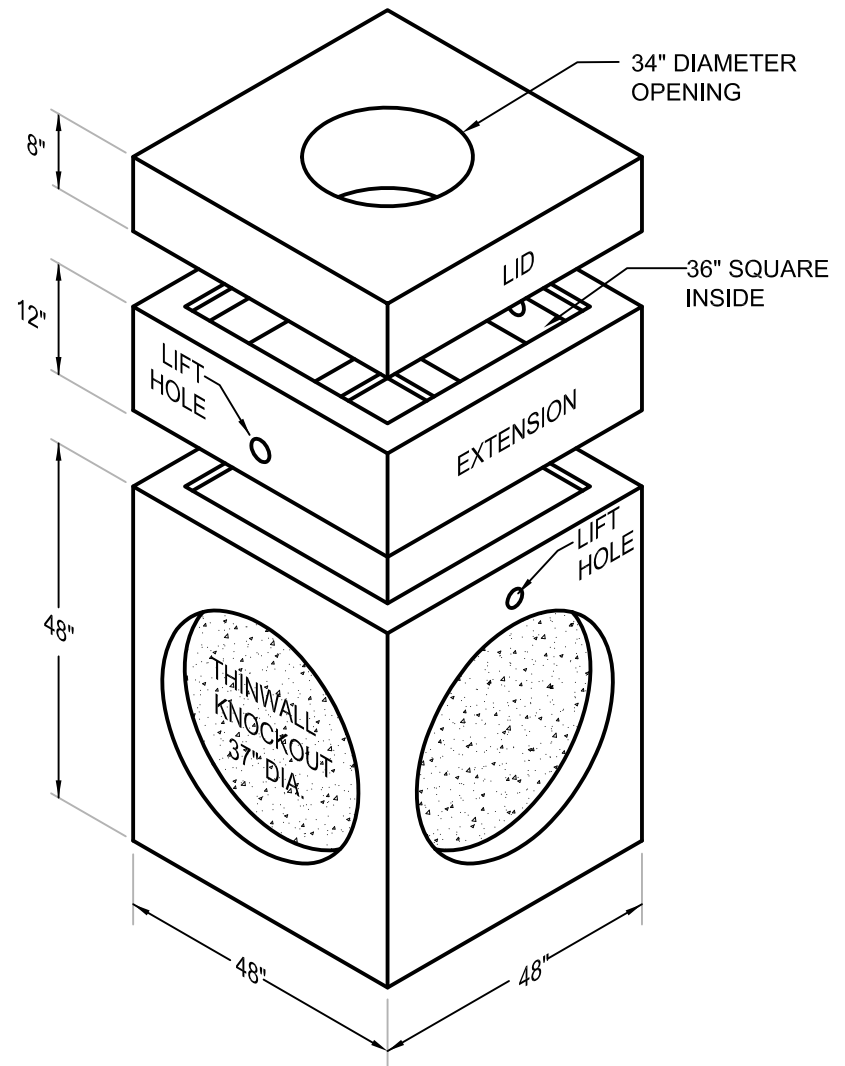
INTERLOCKING EXTENSIONS  
 4500 PSI CONCRETE  
 GRADE 60 REINFORCED  
 AASHTO H-20 RATED  
 6" WALLS AND FLOOR  
 KNOCKOUTS IN ALL SIDES FOR UP TO 27" RCP  
 2" LIFT HOLES IN BASIN AND EXTENSIONS  
 8" TRAFFIC LID WITH 32" CLEAR OPENING

**WEIGHTS**

BASE	4900 LBS.
EXTENSION	1100 LBS.
LID	1200 LBS.

**NOTE:**

ALLOW FOR MANHOLE RING AND COVER IN TOTAL HEIGHT  
 MAXIMUM BURY DEPTH TO BOTTOM OF BOX 14 FT



# 36"x36" JUNCTION BOX



**HILL COUNTRY**  
CONCRETE PRODUCTS, INC.

PO Box 357  
 Kyle, Texas 78640  
 512.268.9711  
 Austin Line 512.476.5838  
 Fax 512.268.0215  
[hillcountryconcrete.com](http://hillcountryconcrete.com)